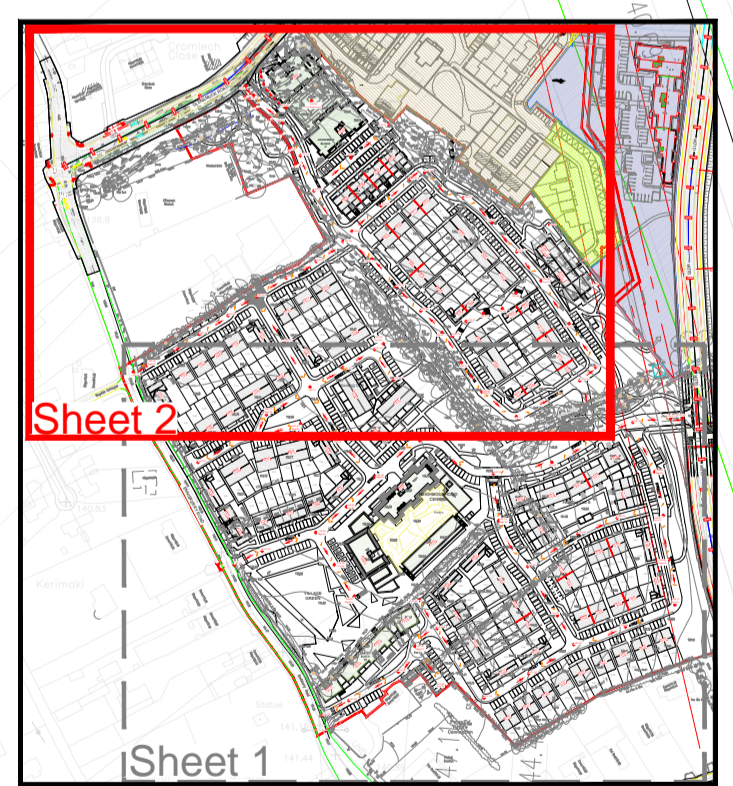
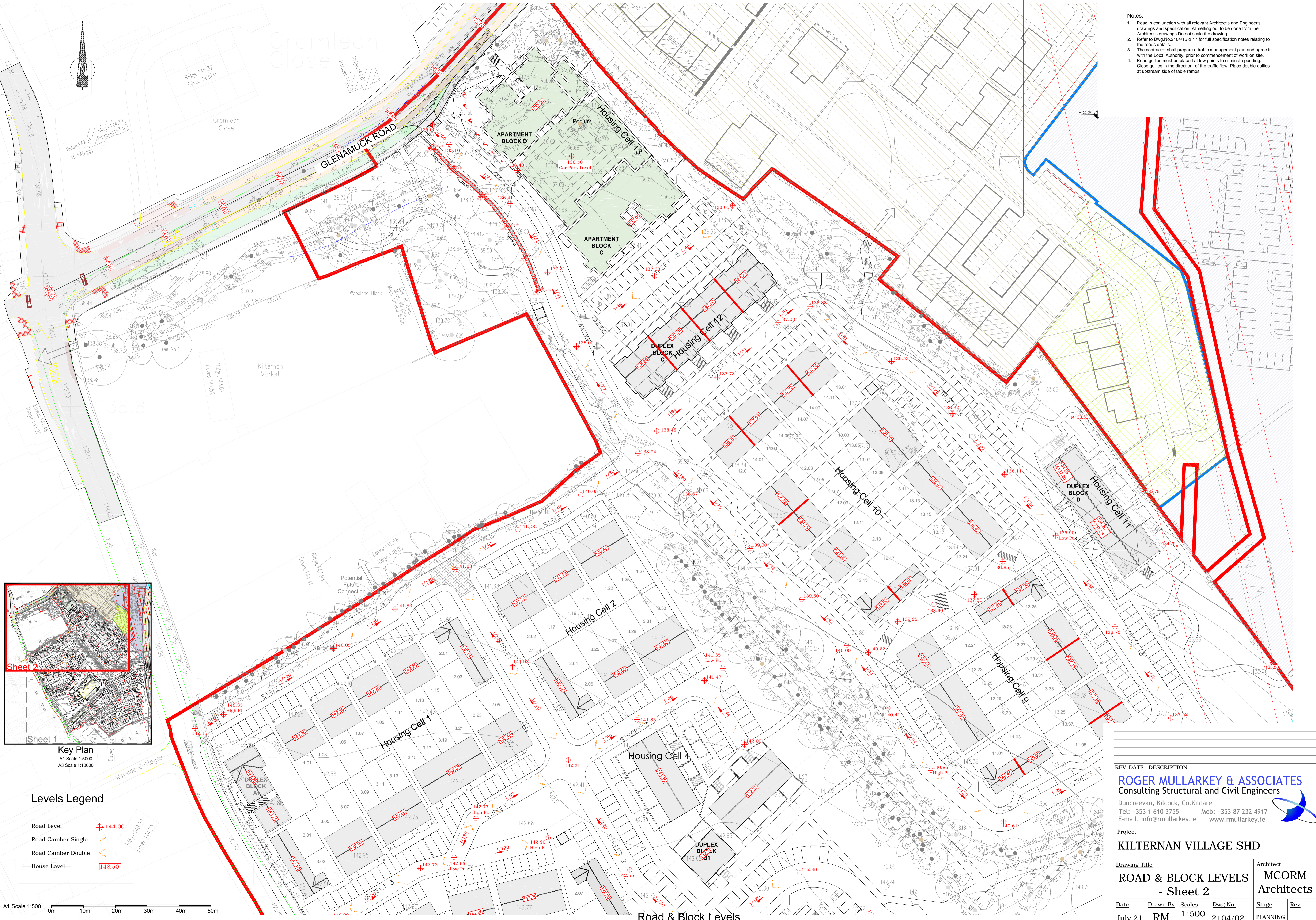
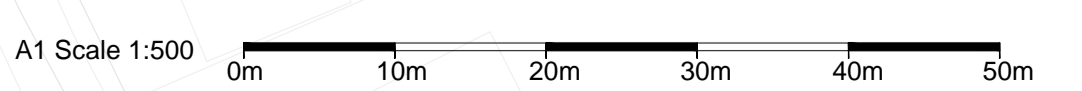


- Notes:
1. Read in conjunction with all relevant Architect's and Engineer's drawings and specification. All setting out to be done from the Architect's drawings. Do not scale the drawing.
 2. Refer to Dwg No.2104/16 & 17 for full specification notes relating to the roads details.
 3. The contractor shall prepare a traffic management plan and agree it with the Local Authority, prior to commencement of work on site.
 4. Road gullies must be placed at low points to eliminate ponding. Close gullies in the direction of the traffic flow. Place double gullies at upstream side of table ramps.



Levels Legend

Road Level	± 144.00
Road Camber Single	↘
Road Camber Double	↘↘
House Level	142.50



©This drawing is Copyright and must only be used for the project noted

REV	DATE	DESCRIPTION
<p>ROGER MULLARKEY & ASSOCIATES Consulting Structural and Civil Engineers</p> <p>Duncreevan, Kiltcock, Co.Kildare Tel: +353 1 610 3755 Mob: +353 87 232 4917 E-mail: info@rmullarkey.ie www.rmullarkey.ie</p>		
<p>Project KILTIERNAN VILLAGE SHD</p>		
<p>Drawing Title ROAD & BLOCK LEVELS - Sheet 2</p>		<p>Architect MCORM Architects</p>
Date	Drawn By	Scales
July'21	RM	1:500 @A1
Dwg.No.	Stage	Rev
2104/02	PLANNING	

Road & Block Levels

Scale 1:500